

# RENTAL AND SALE

## *QUALITY USED*

# ALUMA SYSTEMS

SINGAPORE • HONGKONG - CHINA • PHILIPPINES • INDONESIA

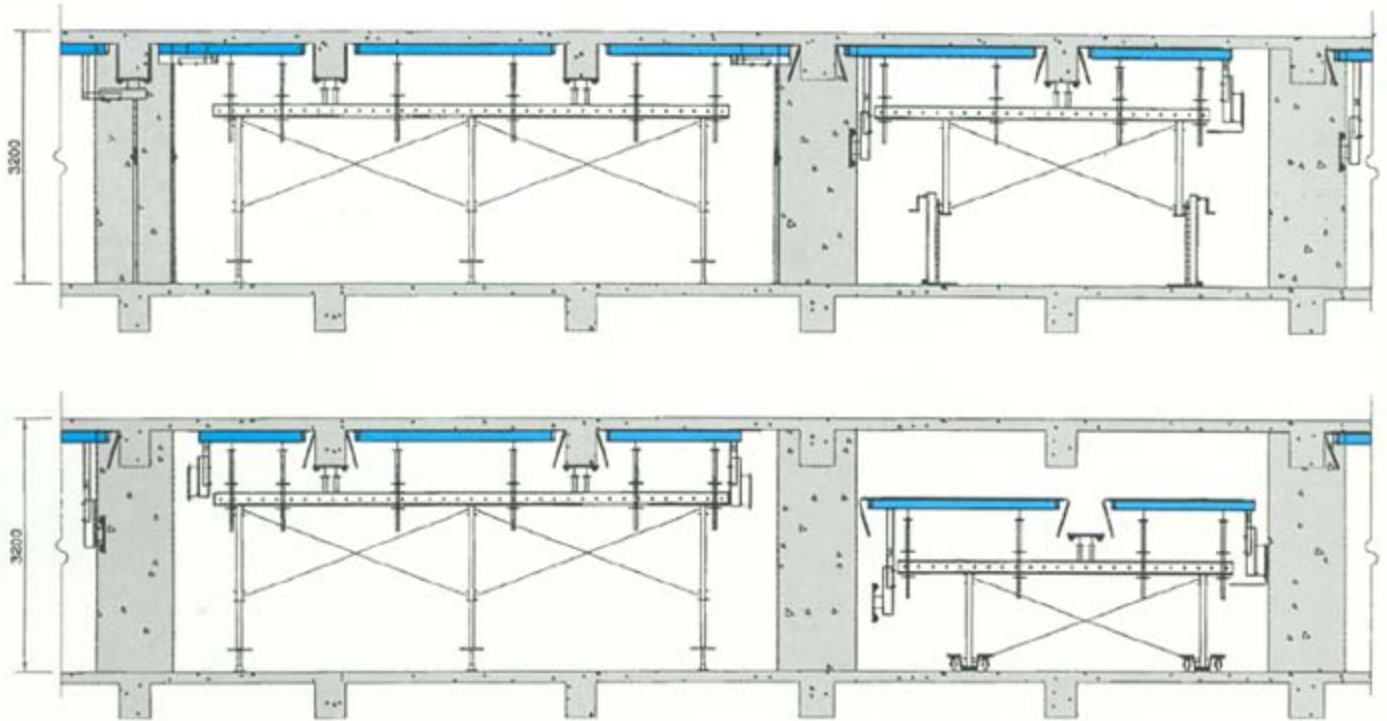
*The most popular formwork system in the world*



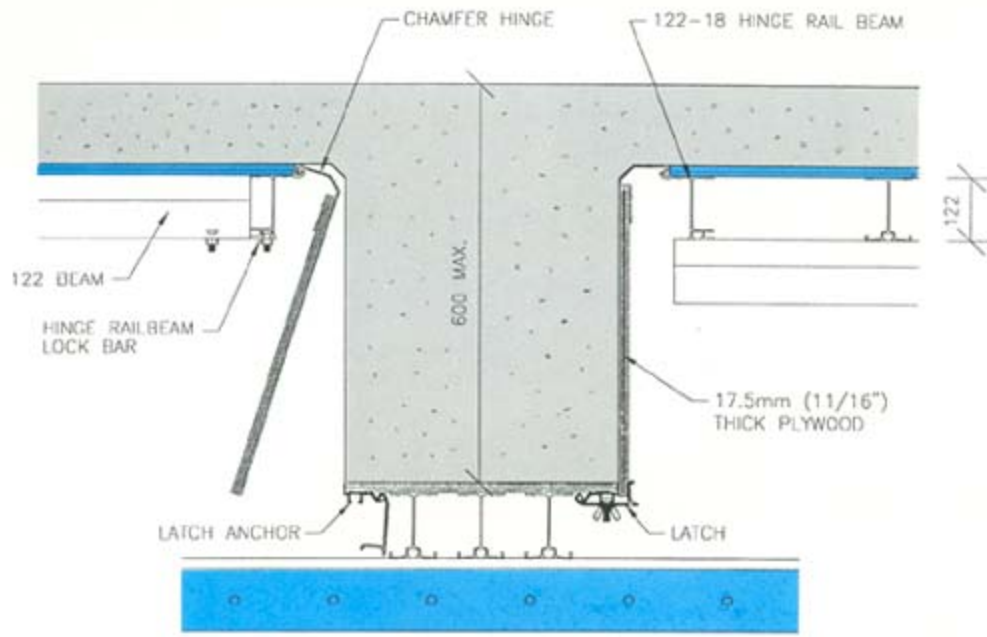
*Overall, the trend is clear, the construction industry relies more on rental in undertaking their projects.*

- We are constantly expanding and keep stocks in Hongkong, Singapore, Philippines and Indonesia to service your immediate formwork and shoring requirements.
- We give expert advice and formwork solutions for various concrete structures.
- We include design engineering, site supervision and training at site.

Versatility, High Productivity, Durability, Flexibility, Quality Finish an economical Formwork System



A low cost solution to any geometric configurations, normal bays or complex beam and slab structure.



A unique Beam Side Hinge mechanism built into tables make the Aluma Table Forms the most high productive system in the world.

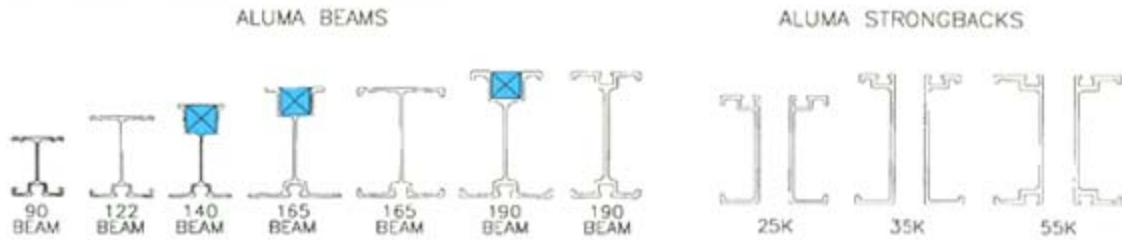


# ALUMA SYSTEMS

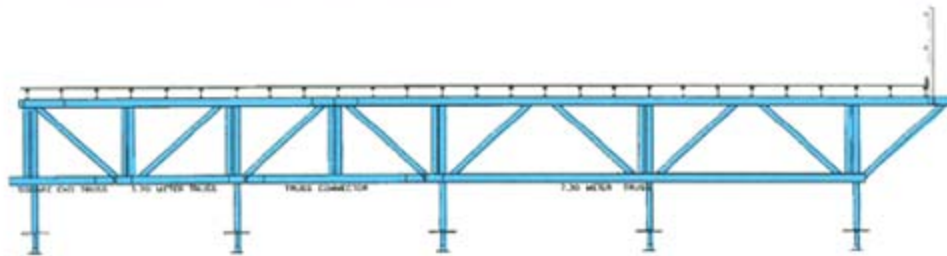
## QUALITY USED

# MECHANIZED FORMWORK SYSTEMS

### Family of Beams and Strongbacks

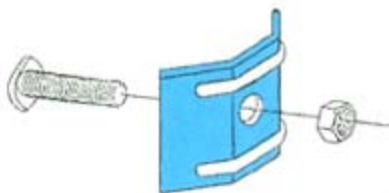


### Truss

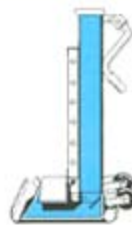


Truss Height: 1.2 and 1.8m

Truss Length: 2.44m, 3.66m, 4.88m, 7.32m, 9.75m, 12.19m, 14.63m and longer



A-CLAMP ASSEMBLY



LOWERING DEVICE



GLIDE